

2M HD Analog IR Outdoor Dome

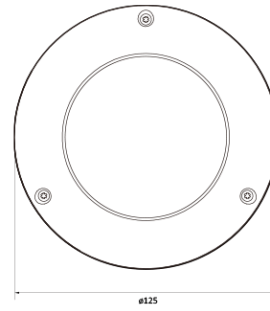
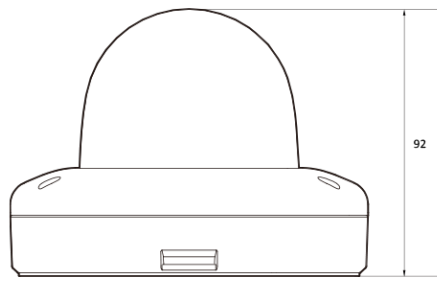
CVD9-12-R

Features

- Analog High Definition Universal over Coax Technology
- Analog High Definition Universal over UTP Technology
- Sens-up Super Low Light Technology
- 1/3" CMOS Sensor
- 1080P Resolution at 30fps
- Wide Dynamic Range (WDR)
- Varifocal P-Iris Lens from 2.8~12mm
- Smart IR™ with Intelligent Camera Sync. 70ft Range
- Smart DNR™ 3D Digital Noise Reduction
- Highlight Masking Exposure (HME)
- True Day/Night Mechanical IR Cut Filter
- Test Video-BNC Output
- Easy Icon Driven OSD Menu with Built-in Joystick
- Programmable Privacy Zones
- Auto Gain Control (AGC)
- Back Light Compensation (BLC)
- Dynamic Range Compressor (DRC) Reveals Low Light Detail
- Auto White Balance (AWB)
- IP66 Certified (Weather Resistant)
- OSD Control via Coax Cable using UTC
- RS485



Dimension (mm)



Specification

Video

Image Sensor	1/3" 2M CMOS
Num of Channels	1
Total Pixel	1956(H) x 1266(V)
Active Pixel	1944(H) x 1092(V)
Max Resolution	1920 X 1080
MIN. Illumination	Color(at Day) : 0.03Lux (F1.4, 30IRE) B/W(at Night) : 0 lux(With IR)
Video Output	AHD or TVI or CVI or CVBS
Only installer Video Output	CVBS
Signal Technology	Max 2M Megapixel Universal
Synchronization	Internal
Scanning Mode	Progressive Scan

Lens

Focal Length	2.8~12mm
Aperture	F1.4
Lens Type	Motorized
IRIS Type	P-IRIS
Horizontal Angle	D:99.8°, H:86°, V:46.8°(Wide) D:39.8°, H:34.6°, V:19.6°(Tele)

Operational

Shutter Speed	1/30(25) - 1/30,000 Slow Shutter (OFF-x32)
Auto Gain Control (AGC)	Yes
Day & Night	TDN (True Day & Night)
Digital Noise Reduction	2D/3D DNR
Wide Dynamic Range (WDR)	Double Scan WDR
Dynamic Range	120dB or above
LEDs	H2IR
LED Distance	70ft
Gamma	0.5
Function	Motion Detection Privacy Zone White Balance Backlight Mirror & Flip

I/O & EVENT

Audio In / Out	No
Alarm In / Out	0/1

I/O & EVENT

RS485	PELCO D
UTC Built-in	UTC
UTP Built-in	No

Electrical

Power Requirement	DC12V / AC24V Dual Voltage DC12V AC24V
Power consumption	DC(LED OFF) :2.76W (230mA) DC(LED ON) : 4.94W (412mA) AC(LED OFF) :2.2W (148mA) AC(LED ON) :4.2W (275mA)

Environmental

Operating Temperature	-20°C ~ 50°C
Cold Start	No
Operating Humidity	Less than 90%(Non-Condensing)
IK Rating	IK10
IP Rating	IP66
Other Certification	FCC CE ROHS

Mechanical

Housing Model	VD9
Housing	Outdoor Dome
Material	Aluminum-Die Casting
Color	White
Dimensions (W x D x H)	125mm 93mm
Weight	0.5

Compatible Accessories



BC10 NPT



GP02
Gang Bracket



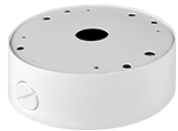
BJC03
Junction Bracket



BW10
Wall Bracket



BC10
Ceiling Bracket



BJC09
Wall Junction Bracket



BP01
Pole Mount Bracket



BCO01
Corner Mount Bracket